



Quaker Hill Elementary School

Christopher Discordia, Principal

[cdiscordia@waterfordschools.org](mailto:cdiscordia@waterfordschools.org)



With a short week this week, we didn't get to  
snap many pictures :(

But we did get this great shot of  
Mrs. Hergott's Pre-K class catching  
snowflakes on their tongues during their  
walk today!

Have a great weekend :)



# Quaker Hill News



Pasta Dinner  
Friday February 2nd  
5-8pm

## Week of January 22nd-26th

Monday - A

Tuesday - B

Wednesday - C

Thursday - D

Friday - A

## Lunch Menu for the week of January 22nd-26th

**Mon:** Pizza bites, cucumbers, broccoli, ranch, apple juice, milk

**Tue:** Hot dog, roll, baked beans, sidekick, milk

**Wed:** Pasta, meat sauce, garden salad, garlic knot, diced peaches, milk

**Thu:** Beef nachos, cheddar cheese sauce, fiesta beans, brown rice, corn muffin, mango juice, orange smiles, milk

**Fri:** Grilled chicken, roll, BBQ sauce, sweet potato fries, broccoli, applesauce, milk



Quaker Hill  
**Pasta**  
Dinner  
& Basket Bonanza

**Friday February 2nd 2024**

**3 Dinner Seating Times Available**  
**5:00 PM, 6:00 PM OR 7:00 PM Seating**  
**Basket Bonanza runs 5:00PM to 8PM**  
**Winners Called @ 8:00 PM**  
***Quaker Hill Elementary School***

Come and enjoy a special evening with family, friends, and school staff.  
Delicious food, amazing baskets, celebrity servers, and some other surprises!

While we encourage all students and families to join us for dinner *and* the basket raffle  
You **DO NOT** have to participate in **BOTH** the activities.

The dinner has sold out in years past so if you are interested in joining us for dinner  
PRESALE is **STRONGLY** encouraged.  
Basket Bonanza tickets **WILL** be available at the event presale is **NOT** required to attend.

**ALL PRESALE TICKETS ARE WILL CALL AND PROVIDED AT THE DOOR ON THE NIGHT OF THE EVENT**

Advanced Tickets available **ONLINE ONLY**

<https://squareup.com/store/quaker-hill-pta>

***Limited seats available - Advanced purchase strongly encouraged.***

***Tickets may sell out prior to event.***

***If there are any available dinner tickets the night of the event they will be on sale  
at the door for additional \$2.00 / ticket***

All payments are non refundable.

**ADULT** (13 years and older) **Pasta Dinner Ticket** is **\$10.00** each

**CHILD** (12 years and younger) **Pasta Dinner Ticket** is **\$5.00** each

**Basket Bonanza Tickets** (25 tickets/sheet) at **\$20.00** per sheet



# Basket Bonanza



The Basket Bonanza is a HUGE part of the upcoming Pasta Dinner on 02/02/2024

Each grade is assigned a theme, we ask that all who can, contribute items to their grade's basket.

- Theme for your child's grade basket are listed below
- Please consider donating an item OR monetary donation to the grade's basket.
- If you own a business, or know someone who does, and would like to make a donation on behalf of that business, OR would like to donate a family basket, please contact Katelin Teel, our Basket Coordinator, at [qhpta2007@gmail.com](mailto:qhpta2007@gmail.com) or 860.941.2373

The success of the Basket Bonanza is a result of the baskets that each grade provides and donations from many local businesses; *your support is greatly appreciated.*

Please send in donations no later than **Wednesday January 24th 2024**

**Thank you for helping make this event a success!!**

## Basket Themes

### **PreK & Kindergarten: ABCD Basket (Art, Bubbles, Craft, Dough)**

This basket will be filled with tons of art supplies, bubbles, craft supplies, and play dough. Possible donation items include, but are not limited to, Bubble wands, bubble trays, markers, construction paper, sketch pads, markers, crayons, colored pencils, acrylics, paint brushes, canvases, slime, modeling clay, cloud dough and play dough.

### **First Grade: Family Game Night**

This basket will be filled with tons of games and activities that families can do together. Possible donation items include, but are not limited to: board games, card games, gift cards for takeout, snacks, boxed dessert you can make as a family, gift cards for local family attractions like aquarium, Fields or Fire, etc..

***Continued on back***

### **Second Grade: Fun in the Snow**

This basket will be filled with tons of activities and items that families use in the snow. Possible donation items include, but are not limited to; sleds, snowball mold, igloo brick mold, snowman kits, shovels, lift tickets for local ski resort, hats, gloves, snow pants, etc.

### **Third Grade: Movie night**

This basket will be filled with tons of items needed for a family movie night. Possible donation items include, but are not limited to: popcorn bowls, candy, popcorn, popcorn flavor topping, gift cards to local movie theatre, gift cards to streaming services, gift cards for pizza (other take out), cozy blankets, etc.

### **Fourth Grade: Super Bowl Party**

This basket will be filled with tons of items needed for a Super Bowl Party. Possible donation items include, but are not limited to: football themed serving trays, napkins, plates and décor, solo cups, tailgating grill, lawn chairs, gift certificates for pizza, wings, etc.

### **Fifth Grade...Money Tree/ Lottery**

This basket will be filled with tons of items needed for a money/lotto themed basket. Possible donation items include, but are not limited to: cash donations or lottery tickets of any denomination. PLEASE NOTE if you choose to donation MONEY, please either write a check for the desired amount OR submit a Venmo Donation so we can be sure to account for all donations.

**We encourage you to contribute an item, if possible, but....**

Monetary donations can be made **by check** (sent to classroom teacher in envelope labeled with GRADE and QHPTA)

**OR**

you can use the **Venmo** link below, PLEASE LABEL with GRADE # - Basket Bonanza



**venmo**



***Light Up The Night @ the QHPTA's Family Glow Dance***

***Friday January 26<sup>th</sup> from 6-8PM*** at the Quaker Hill School Gym

\$5 per child, \$20 MAX per family. Price includes 1 glow stick and admission. ALL CHILDREN MUST HAVE A CHAPERONE TO ATTEND. **NOT A DROP OFF EVENT.**

Chaperones ***DO NOT*** have to pay for a ticket

Admission fee charged at the door

Payment can be made by cash/check/Venmo

***Additional glow items and concessions will be available for purchase.***

***Volunteers Needed! Sign Up Here***

***If we do not have enough volunteers by 01/20/24 we will cancel the event.***



FOR QUESTIONS PLEASE EMAIL QHPTA2007@GMAIL.COM



# Socks for Seniors

Waterford Senior Services, Waterford Youth & Family Services and the Waterford Police Department are teaming up to show Waterford seniors some love!

Donations of new, cozy socks for seniors who may have sensitive feet and foot-related conditions are graciously accepted starting January 10th through February 7th. The classroom who donates the most socks will receive a special visit from Hodges!

Socks will be donated to Senior Housing and Long-term Care Facility residents in the Waterford community.

*Please contact Senior Services Assistant Director Terry Wheeler at [twheeler@waterfordct.org](mailto:twheeler@waterfordct.org) or Officer Fredricks at [efredricks@waterfordct.org](mailto:efredricks@waterfordct.org) with any questions.*



Tuesday,  
January 30, 2024  
9:00AM-10:30AM  
at the Waterford  
Community Center  
24 Rope Ferry RD  
Waterford, CT



FREE coffee  
provided by  
Starbucks  
Store 67833



FREE donuts  
provided by  
Flanders Donut  
& Bake Shop



## JOIN WATERFORD POLICE AND OTHER FIRST RESPONDERS FOR COFFEE AND CONVERSATION!

**No agenda or speeches, just a chance to ask questions and voice concerns. Get to know your local first responders.**

**Come see K-9 Chase, K-9 Ginger, K-9 Hodges & K-9 Traveler!**







# ISAAC MIDDLE SCHOOL



## FREE SATURDAY BASKETBALL CLINIC



**Elevate Your Child's Basketball Skills with ISAAC Middle School!**



ISAAC Middle School is excited to extend an invitation to students in New London and surrounding towns for our top-notch developmental basketball instruction tailored for grades 2-5. Our experienced coaching staff is dedicated to fostering a positive and supportive environment, ensuring your child receives quality training that goes beyond the court.



### What to Expect:

- **SKILL DEVELOPMENT:** From dribbling and shooting to teamwork and strategy, we focus on honing fundamental skills.
- **POSITIVE COACHING:** Our coaches prioritize encouragement and motivation to build confidence both on and off the court.
- **FUN AND INCLUSIVE ATMOSPHERE:** ISAAC Middle School emphasizes the joy of the game and welcomes players of all skill levels.



### Program Dates:

*Five Saturdays: January 20th, January 27th, February 3rd, February 10th, February 17th*



### Location:

*ISAAC Middle School Gymnasium (190 Governor Winthrop Blvd., New London, CT 06320)*



### Session Times:

*Grades 2 and 3: 10:15 am – 11:15 am*

*Grades 4 and 5: 11:15 am – 12:15 pm*



**Open to 20 players at each age group. Slots are limited and will go fast – contact us now!**



Join us as we inspire young athletes to reach their full potential and instill a lifelong love for the game. Don't miss this opportunity to empower your child through basketball excellence at ISAAC Middle School!

For more information and registration details, contact us 860-447-1003 or by email [jalvarez@isaacschool.org](mailto:jalvarez@isaacschool.org). Closing date for registration is January 18, 2024



# SPRING 2024

## WATERFORD YOUTH LACROSSE

**REGISTER ONLINE NOW!**

[www.waterforyouthlacrosse.org](http://www.waterforyouthlacrosse.org)

### Grades K-8

Instructional (K-2): \$30

Equipment available to borrow for the season. No USA Lacrosse Membership or Uniform required.

Travel Teams: \$185 \*Includes Uniform\*

10U Grades 3-4

12U Grades 5-6

14U Grades 7-8

**\*\*NEW Custom & Personalized Uniforms for all Travel Players\*\***

\*All travel players must have a valid USA Lacrosse Membership\*

[www.usalacrosse.com](http://www.usalacrosse.com)

REGISTRATION CLOSES ON 2/1

**Grab your stick and  
let's dominate the field  
in the 2024 season!**



**Recruit a  
friend...score a  
WYLA gift!**



Follow us  
[@waterforyouthlacrosse](https://www.instagram.com/waterforyouthlacrosse)



# Waterford Soccer Club

## Spring Registration opens - January 1, 2024

**Travel League \$100**

Born 2010 - 2015

(2009 8th graders)

**Rec League \$80**

Born 2016 - 2018

**Tykes \$60**

Born 2019 - 2020

No Assessments for Spring

Travel open: 1/1/24 - 3/15/24

\$30 Late fees start: 3/1/24

Travel closes: 3/15/24

Rec open: 1/1/24 - 4/1/24

\$30 Late fees start: 3/15/24

Rec closes: 4/1/24

Tykes open: 1/1/24 (Never closes)



**REGISTER ONLINE AT:**

**[WWW.WATERFORDSOCCER.ORG](http://WWW.WATERFORDSOCCER.ORG)**

QUESTIONS EMAIL: [WTFDSOCCERREGISTRAR@YAHOO.COM](mailto:WTFDSOCCERREGISTRAR@YAHOO.COM)



**WATERFORD**  
Youth & Family  
Services

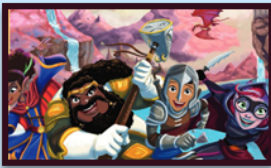
# Winter Afterschool Programs

10 week programs start week of Jan 8th

**Healthy Snack  
Provided each  
class!**

Waterford Public  
School students can  
take bus from school  
directly to the  
Community Center!

**Classes fill up  
quickly, be sure to  
create a profile  
using the link  
below.**

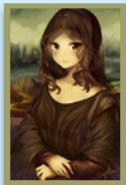


## Dungeons and Dragons

Are you ready to embark on an epic journey filled with mythical creatures, daring quests, and endless adventure? Join our after-school Dungeons & Dragons classes and unleash your imagination in a world of magic and mystery! Throughout the program, you'll learn the art of teamwork and creativity, working with fellow adventurers to overcome challenges, create unforgettable stories, and develop unique characters with their own backgrounds and abilities. Sharpen your critical thinking and

decision-making skills as you face unexpected situations in a dynamic and ever-changing world. Every week, embark on thrilling campaigns filled with epic battles, intriguing NPCs, and epic quests!

- **Mondays 4th & 5th Grades [Dismissal— 5:45pm]**
- **Tuesdays Middle School A [Dismissal— 5:30pm]**
- **Wednesday Middle School B [Dismissal— 5:30pm]**
- **Thursday High School [Dismissal— 5:00pm]**



## FINE ARTS AND ANIME

Unleash your creativity in a captivating artistic journey that blends the best of Western fine arts with the enchanting world of Japanese influence and anime. Our art program is designed especially for middle to high school students, offering a unique opportunity to explore the rich traditions of both worlds while embracing modern pop culture.

**Tuesdays Middle School [Dismissal— 5:30pm]**



## MIXED MEDIA ART

We're calling all elementary schoolers to embark on a vibrant journey into mixed media art! Discover the thrill of combining paint, paper, fabric, and more to breathe life into your imagination. Our expert instructors will guide you through hands-on projects, from captivating collages to whimsical 3D creations. Boost your creativity, problem-solving skills, and passion for art in this unforgettable artistic adventure. Join now and let the magic of mixed media art unleash your inner artist! **Wednesdays 1st thru 5th grade [Dismissal— 5:30pm]**



## Cooking with Class

Discover the art of cooking with our Middle School Chef Program! Join our expert chef to learn essential skills, explore flavors, and create delicious meals! Tuesdays: Grades 6th thru 8th.

**Tuesdays Middle School [Dismissal— 5:30pm]**



## Waterford Whiskers: Baking 101

Unleash your baking talents with our Waterford Whiskers Program! Discover the joy of creating sweet masterpieces, gain essential skills, and let your creativity rise to new heights! Tuesdays: Grades 3rd thru 5th

**Wednesdays 1st thru 5th grade [Dismissal— 5:30pm]**

## REGISTRATION IS NOW OPEN!

Create a profile and register here: [waterfordyouthfamily.recdesk.com/Community/Home](http://waterfordyouthfamily.recdesk.com/Community/Home) or scan the QR code to the right.



**Youth Winter Reading Challenge**

Our Youth Winter Reading Challenge will run from January 8 to February 26. Pick up the sheet for your age group from the Children's Room or print from our website then complete all the fun activities with your family and friends. Turn completed sheets in to the Children's Room for a prize and to be entered into the grand prize raffle. Happy Winter Reading! For ages birth to 18.

Saturday, January 13, 2:00PM - 3:00PM AND Saturday, January 27, 10:00AM - 11:00AM

**Read to Scout**

We are excited to welcome a new certified therapy dog to the library! Come practice your reading skills and give Scout a cuddle in the Children's Room. All ages are welcome, no registration required.



Tuesday, January 16, 4:30PM - 5:30PM

**Read to Hodges**

Stop by the Children's Room anytime between 4:30 and 5:30 pm to read to one of our favorite furry friend, Officer Hodges! No registration required, all ages welcome.



Saturday, January 13, 10:30AM - 11:30AM

**Bilingual Family Storytime**

Join us for a special storytime with Ms. Emy! During this interactive and fun filled session, we will sing songs and read books in both English and Spanish. This program is aimed towards birth to five years old, but all families are welcome to attend, no registration required.



Tuesday, January 23, 5:30PM - 6:30PM

**Bilingual Pajama Storytime**

Join us for a cozy bilingual pajama storytime! Ms Emy will read books and sing songs in English and Spanish. Feel free to dress comfy and bring your favorite stuffed animal and a blanket. No registration required, this program is aimed towards ages birth to five but all families are welcome to join.

*Thank you to the Community Foundation of Eastern Connecticut for providing funding for these programs.*

Saturday, January 27, 2:00PM - 4:00PM

**Six Pointed Snowflakes**

Join Ms. Janice to make some lovely six pointed snowflakes using just wrapping paper and scissors. Ages 5 and up are welcome, no registration required.

Monday, January 29, 4:30PM - 5:30PM

**Junior Detectives Book Club**

Calling all aspiring detectives! Bring your favorite mystery book to life with fellow Investigators - you choose the book! We will also make a fun craft. Recommended for ages 6 to 8 years old, registration is required.

Mondays, January 8, 22 & 29, 10:30AM - 11:00AM

**Family Storytime**

Get ready to read and get your wiggles out! Join Ms. Jenna at the library for some fun stories, songs, and dancing. Recommended for ages birth to five years old with a caregiver. No registration is required.



All programs are free and open to the public

## DROP IN CRAFTS

Monday, January 8, 4:00PM - 6:30PM

Drop In STEM Adventure: STEM Station

Join us in the Children's Room between 4:00 and 6:30 pm to explore various STEM kits, that were donated by the local Girl Scouts. Recommended for ages 5 and up, no registration required.

Tuesday, January 9, 4:00 PM - 6:00 PM

Drop In Creation Station

Stop by the Children's Room anytime between 4:00 and 6:00 pm for a fun craft and to get your creativity flowing! Recommended for ages 5 and up. No registration required.



Monday, January 22, 4:00PM - 6:30PM

Drop in Craft: Cardinal

Join us in the Children's Room anytime between 4:00 and 6:30 pm to create a Winter Cardinal Handprint Craft. Recommended for ages 5 and up, no registration required.



Tuesday January 30, 4:00PM - 6:00PM

Build Club



Stop by the Children's Room anytime between 4:00 and 6:00 pm to build with a variety of STEM sets that we have! Recommended for ages 4 and older, no registration required.

Thursday, January 25, 4:30PM - 5:30PM

DIY Instruments: Thumb Piano

Join us to make your very own thumb piano to take home! All supplies provided, for ages 5 and up, registration required.

## GRAB & GO CRAFTS



Mittens

Jan 2 to Jan 19



Hot Chocolate Character

Jan 20 to Feb 2

Pick up supplies in the Children's Room to make Grab & Go crafts at home, while supplies last.

Step-by-step video tutorial on our Facebook page ([@waterfordpubliclibrary](https://www.facebook.com/waterfordpubliclibrary)).

## TEEN CORNER

Thursday, January 4, 5:30PM - 7:00PM

Craft Night

At this craft night participants will be learning how to knit an ear-warmer using only their fingers! For ages 11 and up, registration required.



Thursday, January 18, 5:30PM - 7:00PM

Teen Drop In Craft

Stop into the Teen Area of the library between 5:30 and 7:00 pm to make a fun craft! Ages 12 and up, no registration required.

Monday, January 22, 12:00PM - 2:00PM

Mindful Midterms

High school students - stop by the library meeting room between noon and 2:00 pm to hang and destress with your friends. We will have snacks, music, crafts, and a variety of games so you can relax and take a break from studying. No registration required.

Friday, January 5, 11:00AM - 12:00PM

Toddler Craft: Igloo



Join us for a fun-filled crafting session where the little ones will use their creativity, and fine motor skills to make an igloo. Mrs. Sharma will start the session with a short story! For ages 3 to 5 years old, no registration is required.

Friday, January 12, 11:00AM - 11:45AM

Story and Sensory Play

Join Miss Ashlee for a story and then explore multiple sensory stations! Recommended for ages 2 to 5 years old with a caregiver. No registration required.

Wednesday, January 17 11:00AM - 11:45AM

Toddler Art



This hands on art session is for young ones to explore through process art with the help of their adult. Miss Ashlee will start the session with a short story! For ages 3 to 5 years old, registration is required.

To keep up with all our activities follow us on Facebook and Instagram



@waterfordpubliclibrary



@waterfordlibraryct

# Waterford Little League

## Register online now for Spring Little League Season!

We are currently updating our website so to register for the upcoming season please scan the QR code



or go to

<https://leagues.bluesombrero.com/waterfordct>

### 2024 Spring Season Registration fees:

Majors/Minors - \$150

Coach Pitch - \$100

Co-ed Tee Ball - \$85

Payment Plans available!  
Family discount for families  
with 3 or more players.

### Important Registration Dates:

#### Majors/Minors

\$25 late registration fee begins 1/1  
Registration closes 1/15

#### Coach Pitch

\$25 late registration fee begins 2/1  
Registration closes 2/15



Please email  
[Registration@wllct.org](mailto:Registration@wllct.org) with any  
registration questions.

CONNECT WITH US



# January Lunch Menu



LUNCH

## JANUARY 2024 WATERFORD SCHOOLS K-12

LUNCH PRICES

Elementary \$3.25

CLMS \$3.50

WHS \$3.75

\*Second Meal=\$4.25 - Adult Meal \$5.00

Please visit [www.myschoolbucks.com](http://www.myschoolbucks.com) to add funds to your child's account.

| Monday  | Tuesday   | Wednesday   | Thursday  | Friday  |
|---|---|---|---|---|
| 1<br><b>School Holiday</b>  | 2<br>Marinara sauce<br>Cheesy Italian -pull-a-parts<br>Marinara sauce<br>Broccoli with ranch cup<br>Cucumber slices<br>Diced peaches Milk | 3<br>Diced chicken Taco salad<br>Tostitos salsa<br>Golden corn Black beans<br>100% frozen fruit juice Sidekick<br>Ice Cold Milk | 4<br><i>National Spaghetti day!</i><br>Meatballs & sauce<br>Green beans<br>Garlic knot<br>Diced pears Milk                              | 5<br>Chicken Nuggets<br>Smile fries Peas<br>Warm Dinner roll<br>Applesauce<br>Ice Cold Milk   |
| 8<br><i>Meatless Monday!</i><br>Cheese pizza Square<br>Baby carrots<br>Cucumber wheels<br>Ranch dressing<br>Diced peaches Milk          | 9<br><i>"Brunch for Lunch"</i><br>French toast Sticks/syrup<br>Chicken sausage links<br>Potato tots Mango juice<br>Strawberry cup Milk    | 10<br>Chicken tenders<br>Potato wedges Golden Corn<br>Oven baked biscuit<br>Apple sauce<br>Ice Cold Milk                        | 11<br><i>"Italian Combo"</i><br>Breaded Ravioli<br>Mozzarella sticks<br>Marinara sauce WG Breadstick<br>Green beans<br>Diced pears Milk | 12<br>Cheeseburger<br>Sandwich salad cup (Lett & Tom)<br>Baked beans<br>Oven fries<br>100% Frozen fruit juice Sidekick<br>Ice cold Milk |
| 15<br><b>School Holiday</b>   | 16<br><i>"Yang's" Orange chicken</i><br>Brown Rice<br>Green beans Warm dinner roll<br>Applesauce Milk                                     | 17<br>Beef & Cheese Tacos<br>Brown Rice<br>Fiesta beans<br>Mini corn muffin<br>Mango juice Milk                                 | 18<br><i>WHS exams</i><br>Big daddy Cheese Pizza<br>Broccoli<br>Cucumber slices Ranch cup<br>Apple slices<br>Ice cold Milk              | 19<br><i>WHS exams</i><br>Crispy Chicken patty<br>on a WG Roll<br>Potato wedges<br>Diced Carrots<br>Orange Smiles Milk                  |
| 22<br><i>WHS/exams</i><br><i>Meatless Monday!</i><br>Pizza Bites<br>Cucumber wheels<br>Fresh broccoli Ranch Dip Cup<br>Apple juice Milk | 23<br><i>WHS/exams</i><br>Hotdog on a roll Oven fries<br>Baked beans<br>100% frozen fruit juice Sidekick<br>Ice Cold Milk                 | 24<br>Pasta with Meat sauce<br>Garden salad<br>Garlic knot<br>Diced peaches<br>Ice Cold Milk                                    | 25<br>Beef Nachos<br>Cheddar cheese sauce<br>Fiesta beans Brown Rice<br>Corn muffin Mango juice<br>Orange smiles Milk                   | 26<br>Grilled chicken on a WG Roll<br>BBQ sauce cup<br>Sweet Potato Fries<br>Broccoli<br>Applesauce Milk                                |
| 29<br><i>Meatless Monday!</i><br>Macaroni & Cheese<br>Steamed Broccoli<br>Sliced Carrots<br>Warm Dinner Roll<br>Diced Pears Milk        | 30<br>Cheeseburger<br>Sandwich Salad Cup<br>Baked Beans<br>Oven Fries<br>Apple Milk   | 31<br>Chicken & Waffles<br>Syrup cup<br>Sweet Potato Fries<br>Green beans<br>Apple sauce Milk                                   | <p>For the 23-24 school year, students qualified for <b>Reduced status</b> will receive one lunch at no cost per day.</p>               |   |

All grain-based items offered are whole-grain rich which means that at least 51% of the grains in the item are whole grain (WG), all other grains are enriched

**A VARIETY OF FRESH FRUITS & VEGETABLES OFFERED DAILY** "Thoroughly cooking meats, poultry, seafood, shellfish or eggs reduces the risk of foodborne illness"

**Alternate Choice Yogurt Meal AVAILABLE Daily** or Alternate Salad meal offered when available (See kitchen manager)

Yogurt Meal =Yogurt, Mozzarella string cheese, baby carrots, craisins, goldfish crackers, dinner roll, milk

Salad Meal=Garden salad with egg, cheese stick garlic knot, fruit choice, milk

**Allergy Warning: Menu items may contain or come in contact with wheat, eggs, soy, nuts, and milk**

**\*Menus are subject to change**

THIS INSTITUTION IS AN EQUAL OPPORTUNITY PROVIDER



# January Breakfast Menu



## JANUARY 2024 WATERFORD SCHOOLS K-12

One daily Breakfast at **no charge**  
to all students this 2023-24 school year!

| Monday  | Tuesday   | Wednesday  | Thursday   | Friday  |
|---|---|--|--|---|
| 1<br><i>School Holiday!</i>   | 2<br>Confetti Pancakes<br>Or assorted WG Muffins<br>Or cereal Choice Milk<br>Fresh Fruit 100% fruit Juice                         | 3<br>Early Riser Egg/ Hashbrown<br>Or assorted WG Muffins<br>Or cereal Choice Milk<br>Fresh Fruit 100% fruit Juice           | 4<br>Egg & Cheese<br>Breakfast Sandwich<br>Or assorted WG Muffins<br>Or cereal Choice Milk<br>Fresh Fruit 100% fruit Juice                 | 5<br>Banana Bread<br>Or assorted WG Muffins<br>Or cereal Choice Milk<br>Fresh Fruit 100% fruit Juice                              |
| 8<br>Maple Waffle<br>Or assorted WG Muffins<br>Or cereal Choice Milk<br>Strawberry cup<br>100% Fruit Juice                                      | 9<br>Egg & Cheese<br>Breakfast Sandwich<br>Or assorted WG Muffins<br>Or cereal Choice Milk<br>Fresh Fruit 100% fruit Juice        | 10<br>French Toast Sticks<br>Or assorted WG Muffins<br>Or cereal Choice Milk<br>Fresh Fruit 100% fruit Juice                 | 11<br>Mini Cinnamon Rolls<br>Or assorted WG Muffins<br>Or cereal Choice Milk<br>Fresh Fruit 100% fruit Juice                               | 12<br>Early Riser Egg /Hashbrown<br>Or assorted WG Muffins<br>Or cereal Choice Milk<br>Fresh Fruit 100% fruit Juice               |
| 15<br><i>School Holiday!</i>  | 16<br>Early Riser Egg/ Hashbrown<br>Or assorted WG Muffins<br>Or cereal Choice Milk<br>Fresh Fruit 100% fruit Juice               | 17<br>Goody Breakfast Ring<br>Or assorted WG Muffins<br>Or cereal Choice Milk<br>Fresh Fruit 100% fruit Juice                | 18<br><i>WHS midterm exam</i><br>Egg & Cheese on a Roll<br>Or assorted WG Muffins<br>Or cereal Choice Milk<br>Fresh Fruit 100% fruit Juice | 19<br><i>WHS midterm exams</i><br>Maple waffle<br>Or assorted WG Muffins<br>Or cereal Choice Milk<br>Fresh Fruit 100% fruit Juice |
| 22<br><i>WHS midterm exams</i><br>Early Riser Egg/ Hashbrown<br>Or assorted WG Muffins<br>Or cereal Choice Milk<br>Fresh Fruit 100% fruit Juice | 23<br><i>WHS midterm exams</i><br>Apple Frudel<br>Or assorted WG Muffins<br>Or cereal Choice Milk<br>Fresh Fruit 100% fruit Juice | 24<br>Egg & Cheese<br>Breakfast Sandwich<br>Or assorted WG Muffins<br>Or cereal Choice Milk<br>Fresh Fruit 100% fruit Juice  | 25<br>Banana Bread<br>Or assorted WG Muffins<br>Or cereal Choice Milk<br>Fresh Fruit 100% fruit Juice                                      | 26<br>Cheese Omelet<br>Or assorted WG Muffins<br>Or cereal Choice Milk<br>Fresh Fruit 100% fruit Juice                            |
| 29<br>WG Blueberry munchkins<br>Or assorted WG Muffins<br>Or cereal Choice Milk<br>Fresh Fruit 100% fruit Juice                                 | 30<br>Egg & Cheese<br>Breakfast Sandwich<br>Or assorted WG Muffins<br>Or cereal Choice Milk<br>Fresh Fruit 100% fruit Juice       | 31<br>Cinnamon Oatmeal<br>Breakfast Round<br>Or assorted WG Muffins<br>Or cereal Choice Milk<br>Fresh Fruit 100% fruit Juice | Alternate choice of assorted cereals and muffins<br>Available daily/Fruit & milk included  |   |

Please visit [www.myschoolbucks.com](http://www.myschoolbucks.com) to add funds to your child's account.

All grain-based items offered are whole-grain rich which means that at least 51% of the grains in the item are *whole grain (WG)*, all other grains are enriched  
**A VARIETY OF FRESH FRUITS OFFERED DAILY** "Thoroughly cooking meats, poultry, seafood, shellfish or eggs reduces the risk of foodborne illness"  
*Allergy Warning: Menu items may contain or come in contact with wheat, eggs, soy, nuts, and milk* \*Menus are subject to change  
**THIS INSTITUTION IS AN EQUAL OPPORTUNITY PROVIDER**

# January Pre-K Menu

**BREAKFAST** **JANUARY 2024** **\* 1 daily Breakfast at "no cost" for all students this school year!**

**LUNCH** **WATERFORD SCHOOLS PRE-K BREAKFAST AND LUNCH** **LUNCH \$3.25 MILK ONLY \$.75**  
Milk choices: 1% White or skim

Please visit [www.myschoolbucks.com](http://www.myschoolbucks.com) to check balance and/or add funds to your child's account.

| Monday   | Tuesday   | Wednesday   | Thursday   | Friday   |
|--|---|---|--|--|
| SCHOOL HOLIDAY!<br>1   | Confetti Pancakes<br>100% juice Milk<br>Cheesy -pull- a -parts<br>Marinara sauce<br>Broccoli & Ranch dip<br>Diced peaches Milk<br>2 | Early Riser Egg/ Hashbrown<br>100% Fruit Juice Milk<br>Soft Chicken & Cheese Taco<br>Corn Applesauce Milk<br>3      | Egg & Cheese on a roll<br>Applesauce cup Milk<br>Spaghetti & meatballs<br>Green beans Pears Milk<br>4                    | Banana Bread Milk<br>Cheese stick Apple slices<br>Chicken nuggets<br>Smile fries Peas Milk<br>5                        |
| Cereal Milk<br>Orange smiles<br>8<br>Pizza square<br>Cucumber Wheels<br>Diced peaches Milk               | Banana Bread<br>100% juice Milk<br>9<br>French toast sticks<br>Potato tots<br>Strawberry cups Milk                                  | French Toast Sticks<br>Blueberry Cup Milk<br>10<br>Chicken Drumsticks<br>Corn Applesauce Milk                       | Yogurt/mini muffin<br>Apple slices Milk<br>11<br>Sun butter Sandwich<br>Mozzarella string cheese<br>Cucumber slices Milk | Cereal Banana Milk<br>12<br>Cheeseburger<br>Oven fries<br>Baked beans Milk   |
| SCHOOL HOLIDAY<br>15   | Cereal Milk<br>Orange smiles<br>16<br>Chicken Nuggets<br>Mashed potatoes<br>Applesauce Milk   | Banana Bread Milk<br>Cheese stick apple slices<br>17<br>Soft beef & Cheese Taco<br>Brown Rice<br>Orange Smiles Milk | Cereal Banana Milk<br>18<br>Pizza Slice<br>Cucumber slices<br>Apple slices Milk  | Yogurt/mini muffin<br>Apple slices Milk<br>19<br>Chicken Patty on a WG Roll<br>Potato wedges diced carrots<br>Milk     |
| Cereal Milk<br>100% Fruit Juice<br>22<br>Pizza Bites Milk<br>Cucumber wheels<br>Fresh broccoli Ranch cup | Mini muffin /cheese stick<br>Strawberry cup Milk<br>23<br>Sun butter Sandwich<br>Mozzarella string cheese<br>Cucumber slices Milk   | Cereal Banana Milk<br>24<br>Pasta with meat sauce<br>Garden salad<br>Diced Peaches Milk                             | Banana Bread Milk<br>Cheese stick Apple slices<br>25<br>Soft Taco Brown rice<br>Orange smiles Milk                       | Cheese omelet 100% juice<br>Goldfish grahams Milk<br>26<br>Chicken Drumsticks<br>Sweet potato fries<br>Applesauce Milk |
| Yogurt/mini muffin<br>100% Juice Milk<br>29<br>Macaroni & Cheese<br>Steamed broccoli<br>Diced pears Milk | Cereal Banana Milk<br>30<br>Cheeseburger on a WG Roll<br>Baked beans<br>Applesauce cup Milk   | Oatmeal breakfast round<br>Apple slices Milk<br>31<br>Chicken & waffles<br>Green beans<br>Milk                      | For the 23-24 school year, students qualified for <b>Reduced status</b> will receive breakfast and lunch at no cost      |  |

All grain-based items offered are whole-grain rich which means that at least 51% of the grains in the item are whole grain (WG), all other grains are enriched

**A VARIETY OF FRESH FRUITS & VEGETABLES OFFERED DAILY** "Thoroughly cooking meats, poultry, seafood, shellfish or eggs reduces the risk of foodborne illness"

Alternate Choice Yogurt Meal available or Alternate Salad meal offered when available (See kitchen manager)

Yogurt Meal =Yogurt, Mozzarella string cheese, baby carrots, raisins, goldfish crackers, dinner roll, milk Salad Meal=Garden salad with egg, cheese stick garlic knot, fruit choice, milk

Allergy Warning: Menu items may contain or come in contact with wheat, eggs, soy, nuts, and milk

\*Menus are subject to change

THIS INSTITUTION IS AN EQUAL OPPORTUNITY PROVIDER



| August 2023 |     |     |     |     |
|-------------|-----|-----|-----|-----|
| Mon         | Tue | Wed | Thu | Fri |
|             | 1   | 2   | 3   | 4   |
| 7           | 8   | 9   | 10  | 11  |
| 14          | 15  | 16  | 17  | 18  |
| 21          | 22  | 23  | 24  | 25  |
| 28*         | 29* | FD  | 31  |     |

- (2 days ~ 2 cumulative)
- 8/28 - ± Staff Convocation
  - 8/29 - \* PD - No School - PK-12
  - 8/30 - First Day of School

| September 2023 |     |     |     |     |
|----------------|-----|-----|-----|-----|
| Mon            | Tue | Wed | Thu | Fri |
|                |     |     |     | 1   |
| SH             | 5   | 6   | 7   | 8   |
| 11             | 12  | 13  | 14  | 15  |
| 18             | 19  | 20  | 21  | 22  |
| SH             | 26  | 27  | 28  | 29  |

- (19 days ~ 21 cumulative)
- 9/4 - School Holiday (Schools Closed)
  - 9/25 - School Holiday (Schools Closed)

| October 2023 |     |     |     |     |
|--------------|-----|-----|-----|-----|
| Mon          | Tue | Wed | Thu | Fri |
| 2            | 3   | 4   | 5   | 6   |
| SH           | 10  | 11  | 12  | 13  |
| 16           | 17  | 18  | 19  | 20  |
| 23           | 24  | 25  | 26  | 27  |
| 30           | 31  |     |     |     |

- (21 days ~ 42 cumulative)
- 10/9 - School Holiday (Schools Closed)

| November 2023 |     |                |     |     |
|---------------|-----|----------------|-----|-----|
| Mon           | Tue | Wed            | Thu | Fri |
|               |     | 1              | 2   | 3   |
| 6             | PD  | 8              | 9   | SH  |
| 13            | 14  | 15             | 16  | 17  |
| 20            | 21  | School Holiday |     |     |
| 27            | 28  | 29             | 30  |     |

- (17 days ~ 59 cumulative)
- 11/7 - \* PD No School for Students - PK-12
  - 11/10 - School Holiday (Schools Closed for Students), P/T Conferences
  - 11/22 - 11/24 - School Holiday (Schools Closed)

| December 2023  |     |     |     |     |
|----------------|-----|-----|-----|-----|
| Mon            | Tue | Wed | Thu | Fri |
|                |     |     |     | 1   |
| 4              | 5   | 6   | 7   | 8   |
| 11             | 12  | 13  | 14  | 15  |
| 18             | 19  | 20  | 21  | 22  |
| School Holiday |     |     |     |     |

- (16 days ~ 75 cumulative)
- 12/22 - Early Dismissal PK-12
  - 12/25 - 12/29 - School Holiday (Schools Closed)

| January 2024 |     |     |     |     |
|--------------|-----|-----|-----|-----|
| Mon          | Tue | Wed | Thu | Fri |
| SH           | 2   | 3   | 4   | 5   |
| 8            | 9   | 10  | 11  | 12  |
| SH           | 16  | 17  | 18  | 19  |
| 22           | 23  | 24  | 25  | 26  |
| 29           | 30  | 31  |     |     |

- (21 days ~ 96 cumulative)
- 1/1 - School Holiday (Schools Closed)
  - 1/15 - School Holiday (Schools Closed)
  - 1/18-1/23 - \*\* Midterm Exams: Early Dismissal 9-12

| February 2024 |     |     |     |     |
|---------------|-----|-----|-----|-----|
| Mon           | Tue | Wed | Thu | Fri |
|               |     |     | 1   | 2   |
| 5             | 6   | 7   | 8   | 9   |
| 12            | 13  | 14  | 15  | 16  |
| SH            |     | 21  | 22  | 23  |
| 26            | 27  | 28  | 29  |     |

- (19 days ~ 115 cumulative)
- 2/19-2/20 - School Holiday (Schools Closed)

| March 2024 |     |     |     |     |
|------------|-----|-----|-----|-----|
| Mon        | Tue | Wed | Thu | Fri |
|            |     |     |     | 1   |
| 4          | 5   | 6   | PT  | 8   |
| 11         | 12  | 13  | 14  | 15  |
| 18         | 19  | 20  | 21  | 22  |
| 25         | 26  | 27  | 28  | SH  |

- (20 days ~ 135 cumulative)
- \*\* 3/7 - P/T Conferences: Early Dismissal PK-12
  - 3/29 - School Holiday (Schools Closed)

| April 2024     |     |     |     |     |
|----------------|-----|-----|-----|-----|
| Mon            | Tue | Wed | Thu | Fri |
| 1              | PD  | 3   | 4   | 5   |
| School Holiday |     |     |     |     |
| 15             | 16  | 17  | 18  | 19  |
| 22             | 23  | 24  | 25  | 26  |
| 29             | 30  |     |     |     |

- (16 days ~ 151 cumulative)
- 4/2 - \* PD No School for Students - PK-12
  - 4/8 - 4/12 - School Holiday (Schools Closed)

| May 2024 |     |     |     |     |
|----------|-----|-----|-----|-----|
| Mon      | Tue | Wed | Thu | Fri |
|          |     | 1   | 2   | 3   |
| 6        | 7   | 8   | 9   | 10  |
| 13       | 14  | 15  | 16  | 17  |
| 20       | 21  | 22  | 23  | 24  |
| SH       | 28  | 29  | 30  | 31  |

- (22 days ~ 173 cumulative)
- 5/27 - School Holiday (Schools Closed)

| June 2024 |     |     |     |     |
|-----------|-----|-----|-----|-----|
| Mon       | Tue | Wed | Thu | Fri |
|           |     |     |     |     |
| 3         | 4   | 5   | 6   | 7   |
| 10        | 11  | LD  | 13  | 14  |
| 17        | 18  | 19  | 20  | 21  |
| 24        | 25  | 26  | 27  | 28  |

- (8 days ~ 181 cumulative)
- 6/6 - 6/11 - \*\* Final Exams: Early Dismissal 9-12
  - 6/11 - \*\* Early Dismissal PK-12
  - 6/12 - Last Day of School Early Dismissal PK-12



**NOTE:** Snow days will be added onto the school year as needed.

BOE Approved: December 8, 2022  
 Revision Approved: December 19, 2023

± Staff Convocation is for all staff of the Waterford Public Schools  
 \* Professional Development is for Administrators, Teachers, Paraprofessionals 8 AM-3 PM  
 \*\* Full day for Paraprofessionals